

WEIGHT STACK PINS

THE CORRECT WEIGHT STACK PIN FOR THE CORRECT MACHINE

When you originally purchased your **BODY MASTERS** selectorized machine, it came with the correct size **BODY MASTERS** weight stack pin.

In the interest of safety, it is imperative that only the correct weight stack pin be used with your machine. Failure to insure a proper matching of the weight stack and pin could result in product failure, or even worse, serious injury to the user.

Please carefully check your machine/s to insure that the proper pin is being employed. Keep in mind that **BODY MASTERS** has produced six (6) different sized weight stacks requiring different-sized pins.

To assist you in this inspection/verification process, please refer to the following diagrams which illustrate the six (6) basic weight stack designs and their corresponding pin sizes.

BODY MASTERS WEIGHT PLATE/PIN SIZE DIAGRAM A

WEIGHT STACK PLATE SIZE		WEIGHT STACK PIN SIZE		BODY MASTERS PIN NUMBER	
THICKNESS	WIDTH HOLE SIZE	DIAMETER	SHAFT LENGTH	BODY MASTERS PIN NUMBER	
3/4"	x 4" (3/8" i.d.)	5/16" x	4"	Pin No. 1	
5/8"	x 5" (5/16" i.d.)	1/4" x	4"	Pin No. 2	
1"	x 3" (7/16" i.d.)	3/8" x	3 1/2"	Pin No. 3	
1"	x 6" (7/16" i.d.)	3/8" x	5"	Pin No. 4	
3/4"	x 6" (3/8" i.d.)	5/16" x	5"	Pin No. 5	
BASIC WEIGHT PLATE	1" x 4" (7/16" i.d.)	3/8" x	4" (MAGNETIC)	Pin No. 6	

If you no longer have the original weight stack pin/s that came with your **BODY MASTERS** machine/s, notify our Parts Department for the proper replacement pin/s.

BODY MASTERS WEIGHT PLATE/PIN SIZE DIAGRAM B

PLATE & PIN NO. 1

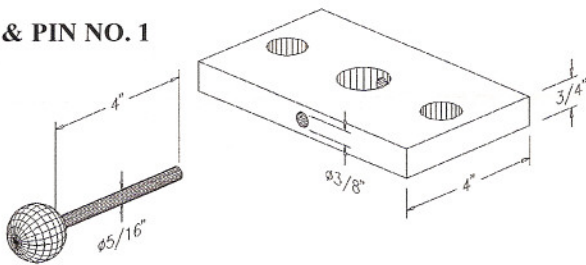


PLATE & PIN NO. 2

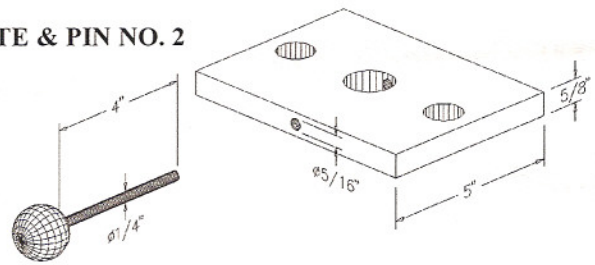


PLATE & PIN NO. 3

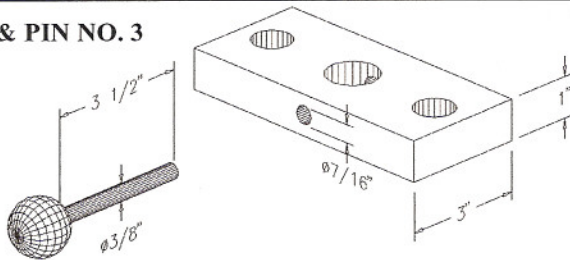


PLATE & PIN NO. 4

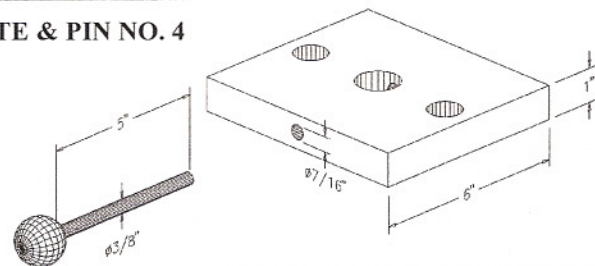


PLATE & PIN NO. 5

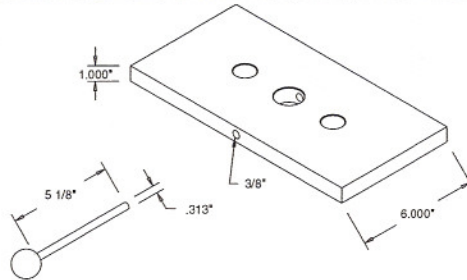


PLATE & PIN NO. 6

